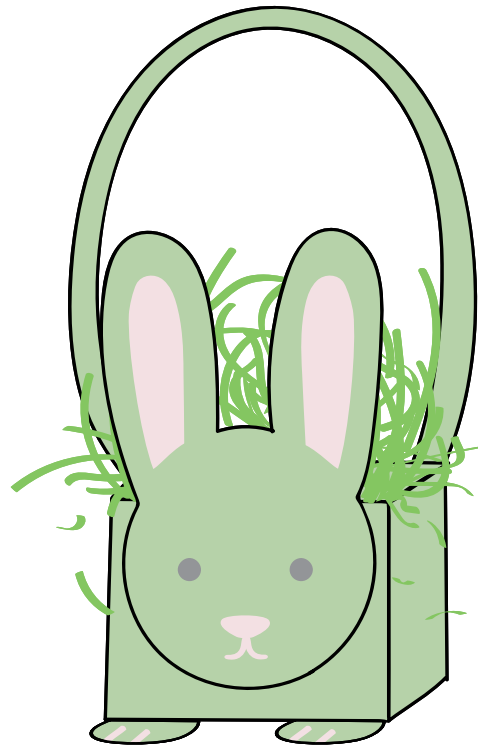
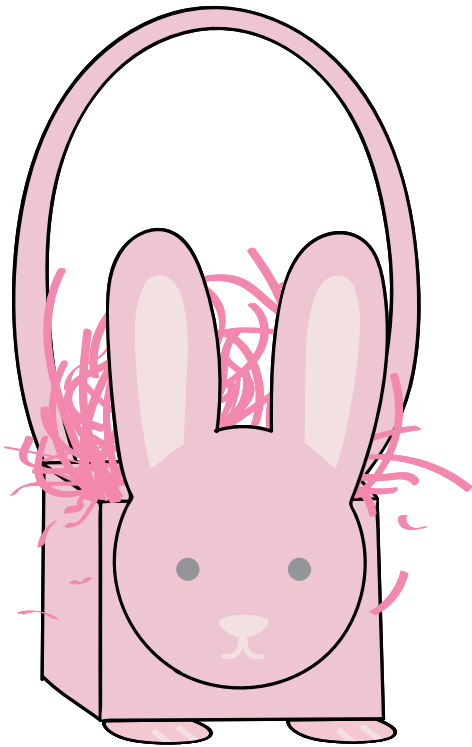


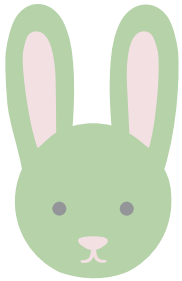
EASTER BUNNY BASKET KIT PINK / GREEN



EASTER BUNNY BASKET KIT: GREEN

INSTRUCTIONS

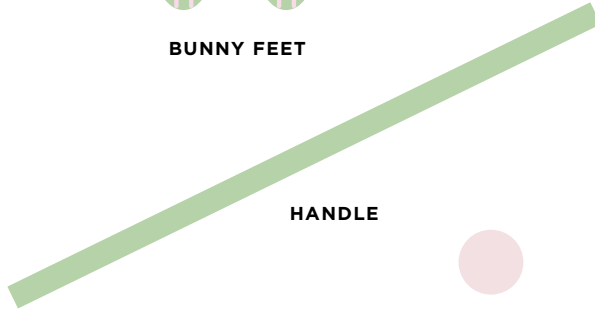
 Materials included:



BUNNY HEAD



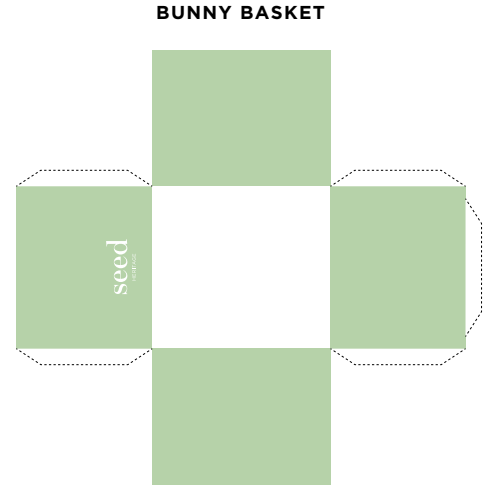
BUNNY FEET



HANDLE



BUNNY TAIL



BUNNY BASKET

 You will also need:

Printer

Stick glue

Scissors

Coloured paper

STEP 1: Print out both of your cut out sheets onto some card.

STEP 2: Take your bunny basket and cut along the dotted lines. Once it is cut out, fold along the green lines.

STEP 3: Pick up your bunny peices cut out sheet and cut each piece out, following along the dotted lines.

STEP 4: Glue the side tabs to the inside of the adjoining basket sides to form the bunny basket.

STEP 5: Take your bunny head and glue the remaining tab just under the bottom of the bunny's ears.

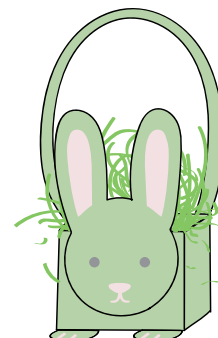
STEP 6: Stick the bunny feet under the front of your basket. Using the white tabs of the feet as your sticking base.

STEP 7: Take your bunny tail and glue it to the back of your bunny basket, making sure it is peaking over the top of the edge.

STEP 8: Glue your handle to the inside of the right and left side of your bunny basket.

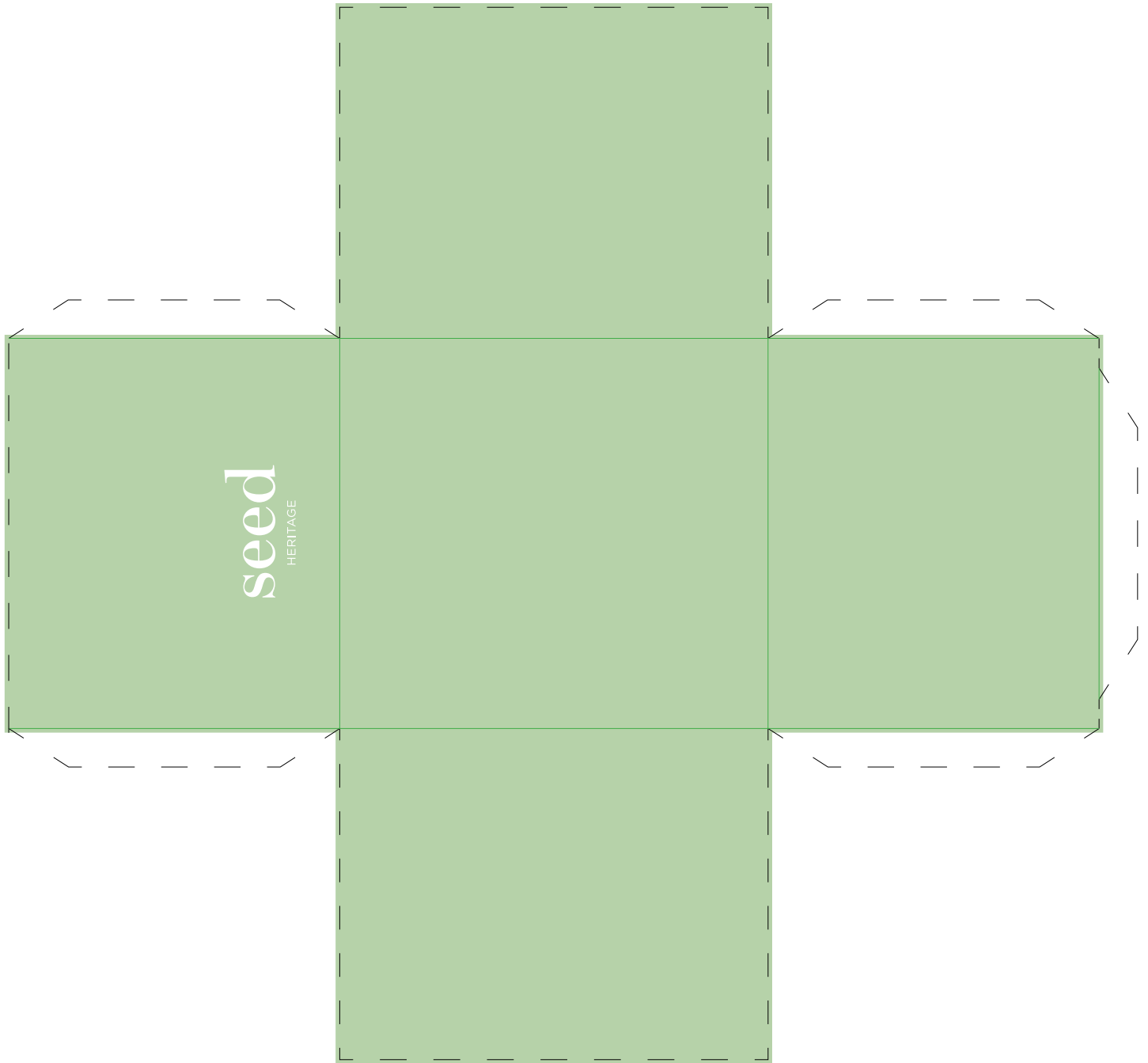
STEP 9: To make the basket stuffing, cut your coloured paper into thin strips.

STEP 10: Fill your basket with your stuffing and you're now ready to collect your Easter eggs!



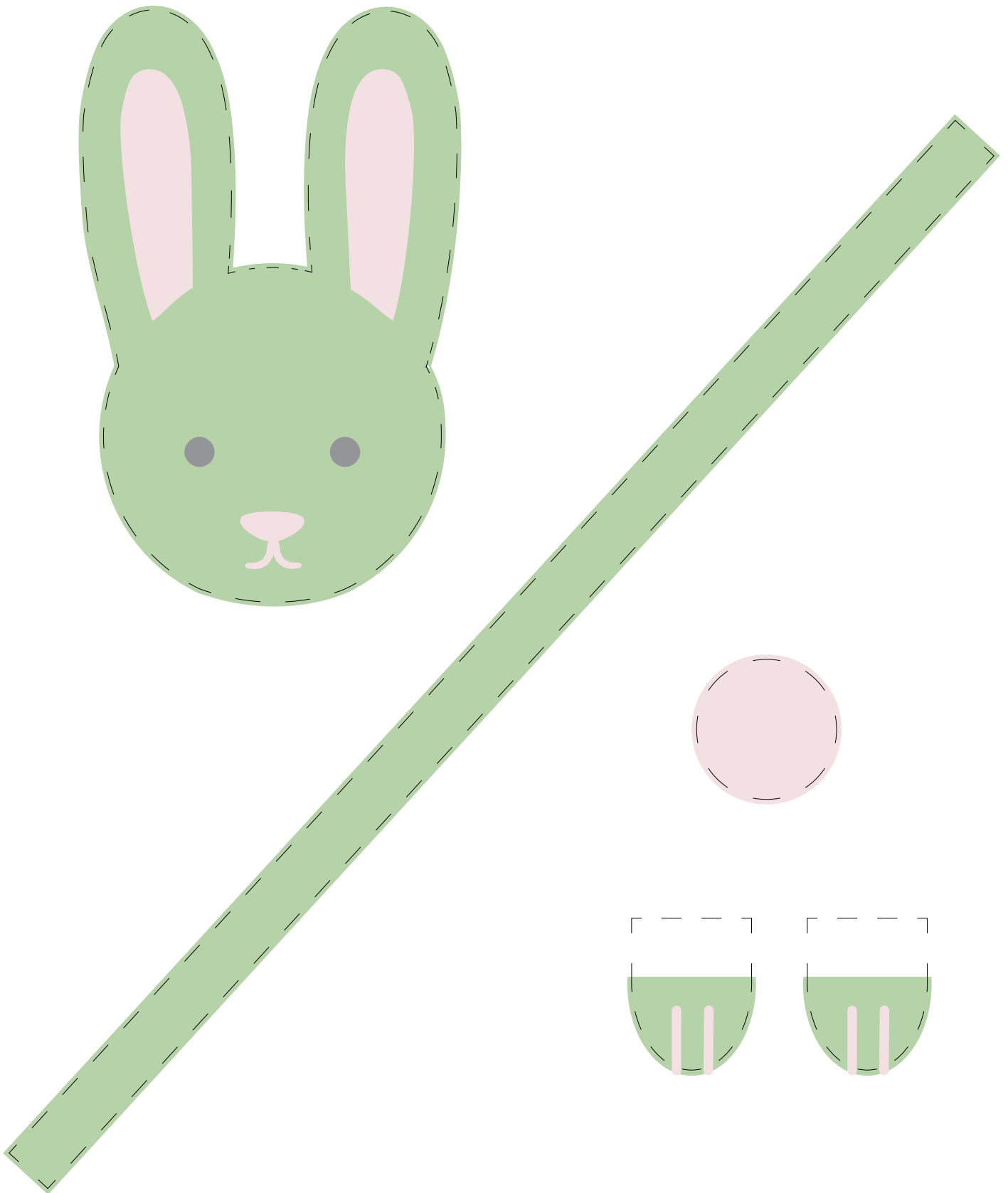
EASTER BUNNY BASKET KIT: GREEN

BUNNY BASKET CUT-OUT



EASTER BUNNY BASKET KIT: GREEN

BUNNY PIECES CUT-OUT

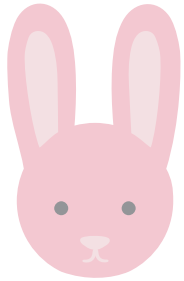


EASTER BUNNY BASKET KIT: PINK

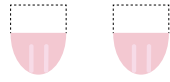
INSTRUCTIONS



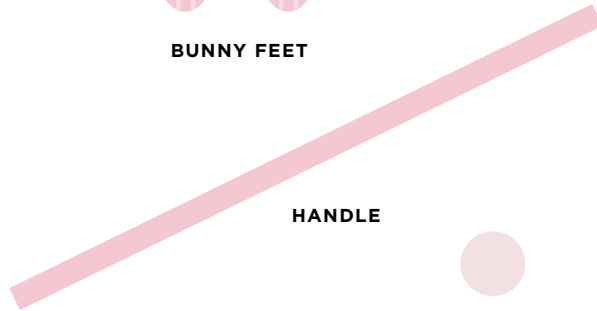
Materials included:



BUNNY HEAD



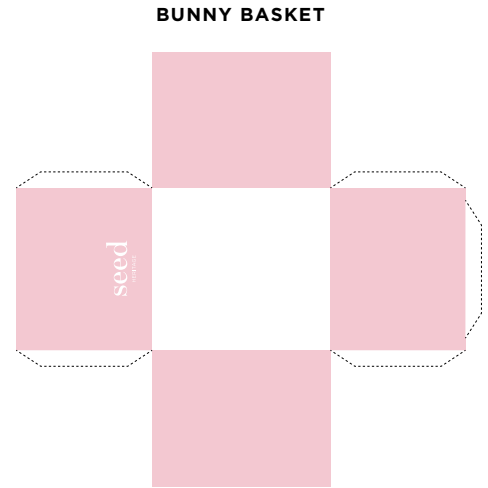
BUNNY FEET



HANDLE



BUNNY TAIL



BUNNY BASKET



You will also need:

Printer

Stick glue

Scissors

Coloured paper

STEP 1: Print out both of your cut out sheets onto some card.

STEP 2: Take your bunny basket and cut along the dotted lines. Once it is cut out, fold along the green lines.

STEP 3: Pick up your bunny peices cut out sheet and cut each piece out, following along the dotted lines.

STEP 4: Glue the side tabs to the inside of the adjoining basket sides to form the bunny basket.

STEP 5: Take your bunny head and glue the remaining tab just under the bottom of the bunny's ears.

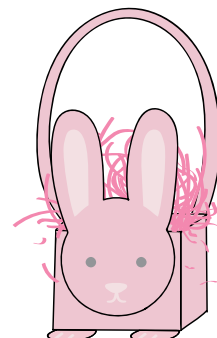
STEP 6: Stick the bunny feet under the front of your basket. Using the white tabs of the feet as your sticking base.

STEP 7: Take your bunny tail and glue it to the back of your bunny basket, making sure it is peaking over the top of the edge.

STEP 8: Glue your handle to the inside of the right and left side of your bunny basket.

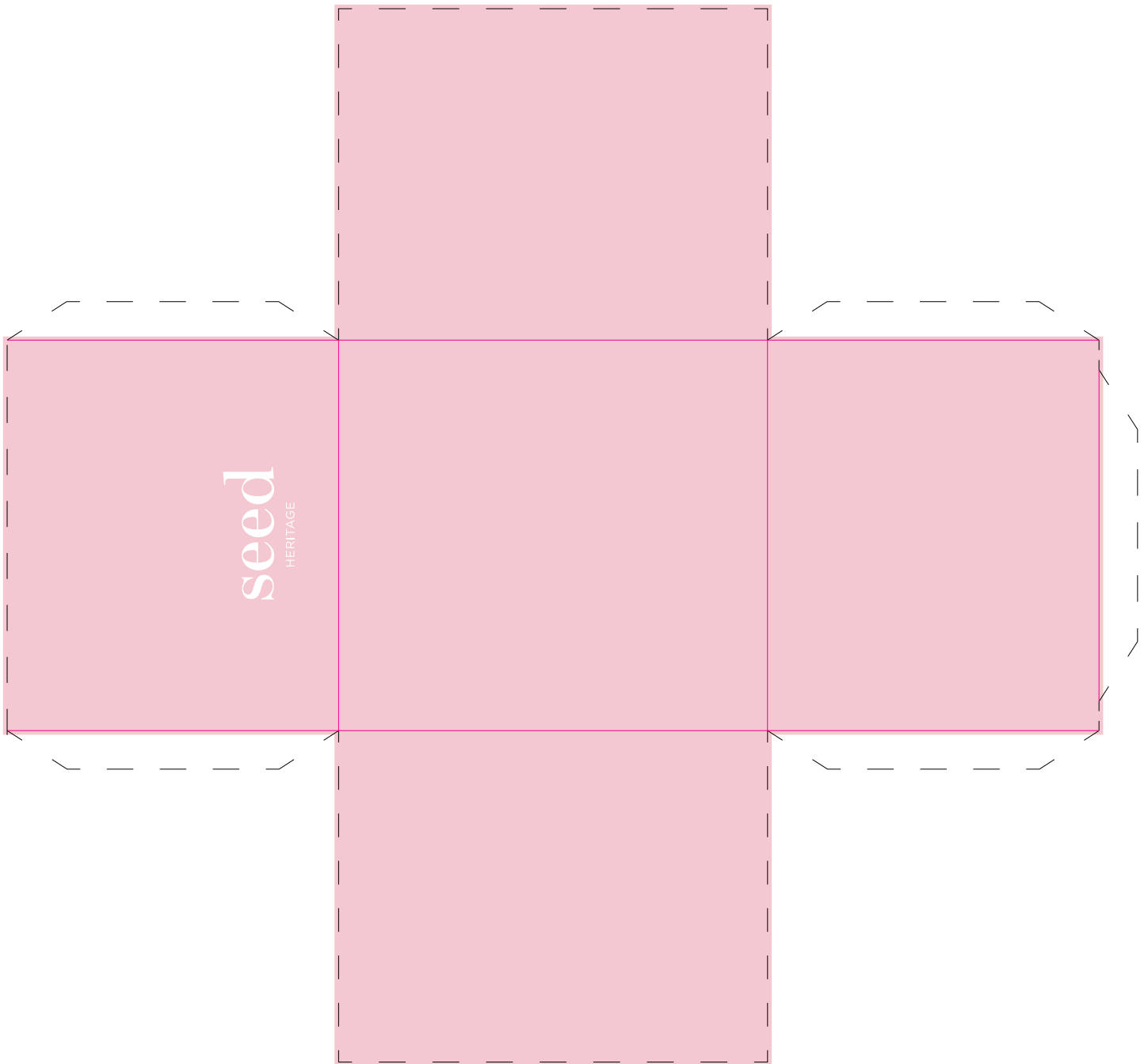
STEP 9: To make the basket stuffing, cut your coloured paper into thin strips.

STEP 10: Fill your basket with your stuffing and you're now ready to collect your Easter eggs!



EASTER BUNNY BASKET KIT: PINK

BUNNY BASKET CUT-OUT



EASTER BUNNY BASKET KIT: PINK

BUNNY PIECES CUT-OUT

